

08 PLAN OF OAKWOOD CEMETERY (L. 2 P. 7) AND  
 07 ADDITION TO OAKWOOD CEMETERY (L. 18, P.62)  
 06 PART OF FRACTIONAL SECTION 21, T. 3 S.,  
 R. 11 E., CITY OF WYANDOTTE, WAYNE COUNTY,  
 MICHIGAN.

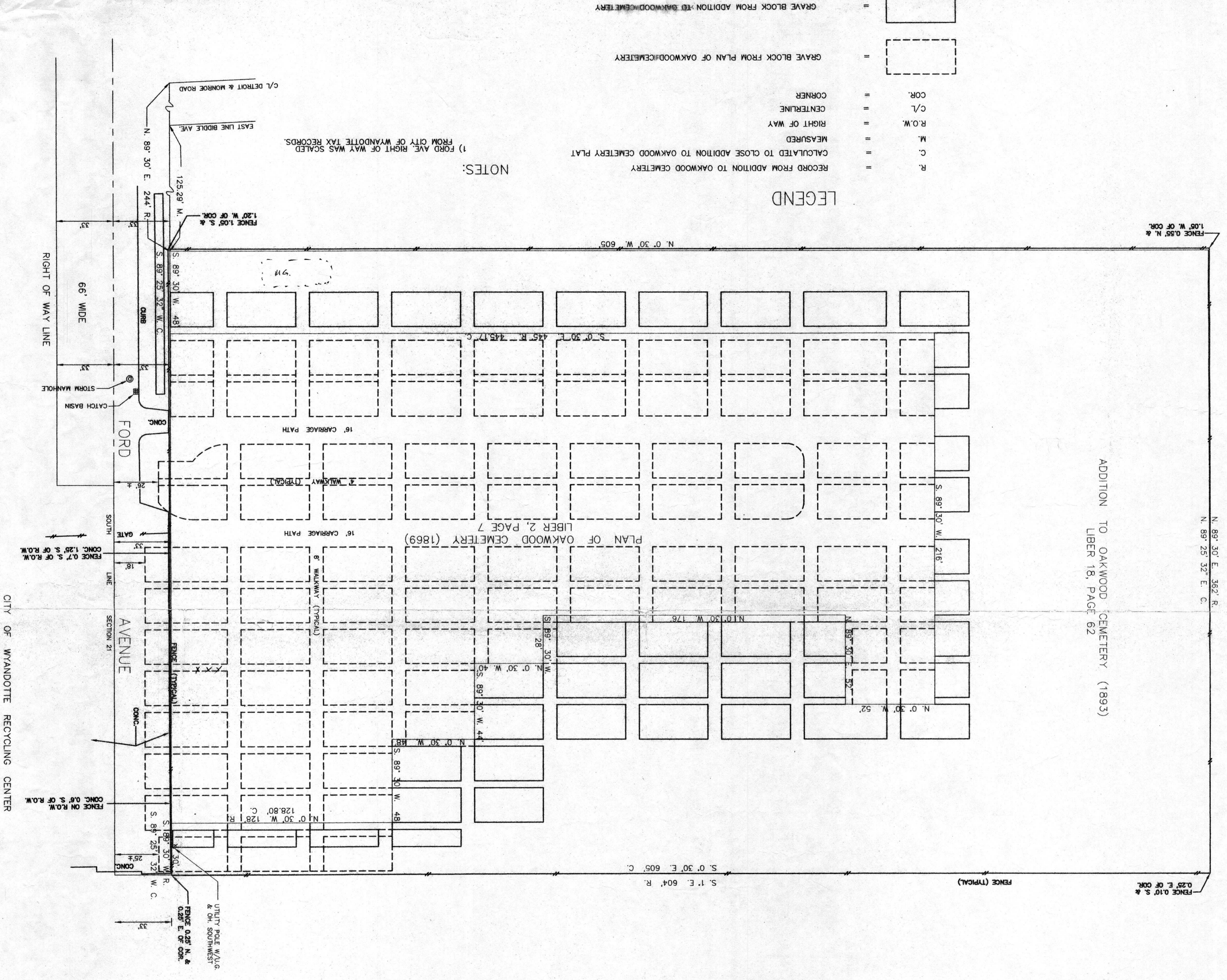
PLAN OF OAKWOOD CEMETERY FOR THE CITY OF WYANDOTTE

REVISIONS	
NO.	DATE
1	1/02/02

URBAN ENGINEERING CO.  
 6748 ALLEN ROAD  
 ALLEN PARK, MICHIGAN 48101  
 (313) 383 - 5155

THE ORIGINAL PRODUCTION OF THIS DOCUMENT IS THE ORIGINAL DRAWING ON MYLAR FILM. IT IS THE RESPONSIBILITY OF THE CLIENT TO KEEP THE ORIGINAL DRAWING SAFE AND TO USE OR RELY ON REPRODUCTIONS OR SUBSEQUENT REPRODUCTIONS OF THE ORIGINAL DOCUMENT THAT THE URBAN ENGINEERING COMPANY SHALL NOT BE HELD RESPONSIBLE FOR ALTERATIONS, ADDITIONS OR DELETIONS THEREIN.

March, 19 2002



LEGEND

- R. RECORD FROM ADDITION TO OAKWOOD CEMETERY
- C. CALCULATED TO CLOSE ADDITION TO OAKWOOD CEMETERY PLAT
- M. MEASURED
- R.O.W. RIGHT OF WAY
- C/L CENTERLINE
- COR. CORNER

NOTES:

1) FORD AVE. RIGHT OF WAY WAS SCALED FROM CITY OF WYANDOTTE TAX RECORDS.



ADDITION TO OAKWOOD CEMETERY (1893)  
 LIBER 18, PAGE 62

GRAVE BLOCK FROM ADDITION TO OAKWOOD CEMETERY

GRAVE BLOCK FROM PLAN OF OAKWOOD CEMETERY